

Our **Value Series** represent a traditional UPS system platform whose function is aimed towards the protection of your vital computer systems. They sacrifice neither reliability nor power to achieve their compact size, and mark the right choice for a Home or SOHO application environment. They are designed for customers who value the stability and manageability of a traditional UPS system platform.

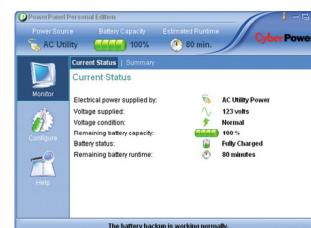
These series have been developed on a **Line-Interactive** hardware platform designed to meet your **Home/SOHO** needs. With 3-main battery & surge backed computer outlets, enhanced safety features and a highly controlled operation, you can go ahead and connect onto them your most vital computer systems and related peripherals.

Unique features within these models make it easy to use and manage, protecting your investment for many years to come! They represent a traditional value and a stable platform of operation.



- Line Interactive Technology
- Automatic Voltage Regulator
- EMI, RFI, Surge & Lighting Spike Protection
- Elaborate Power Management Software Included
- We offer 25,000.- EUR Connected Equipment Life Time Guarantee
- Auto-Restart, Auto-Charge, and Scheduled Shutdown Function
- Easy and Fast Serviceability
- Connection to PC via USB port, or RS232 Serial Port
- Compact Design, High Reliability
- Great Performance Output suitable to Home/SOHO requirements

PowerPanel® Personal Edition Management S/W



AUTO-SHUTDOWN SOFTWARE
CyberPower PowerPanel® Personal Edition Management Software, is Compatible with Windows VISTA, XP, 2000 Pro., ME, 98, Windows Server 2003, Mac and Linux.

CAPACITY:

Value 400E: 400VA or 240W. Value 600E: 600VA or 360W. Value 800E: 800VA or 480W

TYPICAL RUN-TIME:

Value 400E: 14 min. Value 600E: 24 min. Value 800E: 35 min

INPUT POWER:

- Voltage Range: 165V ~ 270V
 - Frequency Range: 47Hz / 63 Hz auto-sensing
-

OUTPUT POWER:

- On Battery Output Voltage: Simulated Sine-Wave at 230V (+/- 10%)
 - On Battery Output Frequency: 50Hz / 60 Hz (+/- 1%)
 - Typical Transfer Time: 4ms
 - Overload Protection Scheme: *On Main Power by Fuse*, and on Battery Power by *Internal Current Limiting*
 - Automatic Voltage Regulator (AVR): Boost Only
-

BATTERY INFORMATION:

- Sealed Maintenance-Free Lead-Acid Batteries, Replaceable by User
 - Value 400E: 12V, 4.5 AH x 1. Value 600E: 12V, 7 AH x 1. Value 800E: 12V, 9 AH x 1
 - Typical Recharge Time: 8 Hours
-

STATUS INDICATORS:

- Power-On / Using Battery LED
 - Audio Alarms for: Overload, On-Battery, and Low-Battery
-

RECEPTACLES:

- Three IEC 320 C13 Plugs
-

CONNECTORS:

- USB Connector to PC
 - RS-232 Serial Connector to PC or Server
-

MANAGEMENT & CONTROL:

- Manual Self-Test
 - Auto Re-Charge
 - Auto Re-Start
 - Scheduled Shutdown Function
 - Power Panel® Personal Edition elaborate software for PC connectivity and Management Control
-

PHYSICAL INFORMATION:

Dimensions: 320 (L) x 100 (W) x 140 (H) mm
Weight: Value 400E: 4kg. Value 600E: 5.1kg. Value 800E: 6.1kg
Storage Temperature: -15°C ~ +45°C
Operating Temperature: 0°C ~ 40°C
Operating Humidity: 0%~95% non-condensed

**DISTRIBUTED BY:**

CyberPower's
Manufacturing
Facilities are
ISO 9001:2000,
ISO 14000, and
QC080000
Approved