

Our **Professional Tower Series UPS Systems** mark a continuation in the tradition of excellence our engineering team has achieved. With many special features and power to spare, they mark the right choice for a demanding **mid-Business, Corporate Data Centres, and Server-Networking-Workstation application** environments. They are designed for mission critical applications, and for those who value administration flexibility and performance based on a stable multi-purpose platform.

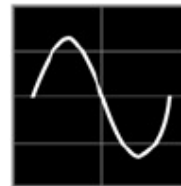
These series have been developed on a **Line-Interactive, Pure Sine-Wave** hardware platform. With several Battery & Surge backed outlets, enhanced features and a highly controlled operation, you can go ahead and connect onto them your vital electronic systems and related peripherals, being ready in case of a power outage!

Unique features within these models make them easy to use and manage, protecting your business investments for many years to come! We are proud to recommend these systems to you!



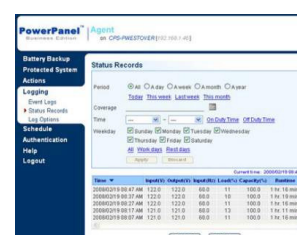
- Pure Sine-Wave Output Power for special Applications
- Line Interactive Technology and CPU based full Digital Control
- Automatic Voltage Regulator
- EMI, RFI, Surge & Lighting Spike Protection
- Phone, Fax, Modem, DSL, and Network Protection
- Elaborate Business Power Management Software Included
- Programmable Brownout and Over-Voltage Protection
- We offer 50,000.- EUR Connected Equipment Life Time Guarantee
- Auto-Restart, Auto-Charge, and Scheduled Shutdown Function
- Easy and Fast Serviceability with Hot Swappable Batteries
- Multiple Interface Ports for simultaneously connecting two Servers/Computers
- SNMP/HTTP optional Communication Module for Remote access (for the PP1500E & PP2200E models)
- High Performance Output, High Reliability & Elaborate Features suitable for the demanding Business Environments

PURE SINE-WAVE OUTPUT



For those applications that require pure *Sine Wave* power, CyberPower provides UPS models, with True Sine Wave output, also known as *Pure Sine Wave*. They are designed for electronic devices that have *Pure Factor Correction (PFC)* Power Supplies as well as for small AC motors and other devices that need true sine-wave power in order to function properly.

PowerPanel® Business Edition Management S/W



AUTO-SHUTDOWN SOFTWARE
CyberPower PowerPanel® Business Edition Management Software, is Compatible with Windows VISTA, XP, 2000 Pro., ME, 98, Windows Server 2003, Mac and Linux.

CAPACITY & RUN-TIME:

- **PP 1100E:** 1100VA or 700W. **PP 1500E:** 1500VA or 1000W. **PP 2200E:** 2200VA or 1500W
- TYPICAL RUNTIME: **PP 1100E:** 75 min. **PP 1500E:** 98 min. **PP 2200E:** 112 min

INPUT POWER:

- Voltage Range: 170V ~ 280V
- Frequency Range: 50Hz / 60 Hz (+/- 3Hz) auto-sensing

OUTPUT POWER:

- On Battery Output Voltage: Pure Sine-Wave at 230V (+/- 5%)
- On Battery Output Frequency: 50Hz / 60 Hz (+/- 1%)
- Typical Transfer Time: 4ms
- Overload Protection Scheme: On Main Power by *Circuit Breaker*, and on Battery Power by *Internal Current Limiting*
- Automatic Voltage Regulator (AVR): Double Boost & Single Buck

BATTERY INFORMATION:

- Sealed Maintenance-Free Lead-Acid Batteries, Hot Swappable, and Replaceable by User
- **PP 1100E:** 12V, 10 AH x 2. **PP 1500E:** 12V, 7 AH x 4. **PP 2200E:** 12V, 9 AH x 4
- Typical Recharge Time: 8 Hours

STATUS INDICATORS:

- Power-On LED
- Using Battery LED
- AVR Condition LED
- Load Level LED array
- Battery level LED array
- Audio Alarms for: Overload, On-Battery, and Low-Battery

RECEPTACLES:

- **PP 1100E:** Six IEC 320 C13 Plugs. [4 with Battery Backup & Surge Protection, 2 with Surge Protection Only]
- **PP 1500/2200E:** Eight IEC 320 C13 Plugs. [6 with Battery Backup & Surge Protection, 2 with Surge Protection Only]
- RJ11/RJ45 Input/Output for Surge Protection

CONNECTORS:

- **PP 1100E:** 2 x RS-232 Serial Connectors to Computers [*USB to Serial Converter cable included*]
- **PP 1500/2200E:** USB & RS-232 Connectors to Computers/Servers
- Optional SNMP Communication Module [*PP 1500E and PP2200E Only*]

MANAGEMENT and CONTROL:

- Manual Self-Test
- Auto Re-Charge and Auto Re-Start
- Programmable Brownout and Over-Voltage Protection
- Scheduled Shutdown Function
- SNMP/HTTP optional adapter for Remote Access & Management via LAN/Internet [*PP 1500E and PP2200E Only*]
- Power Panel® Business Edition elaborate software for Computer Connectivity and Management Control

PHYSICAL INFORMATION:

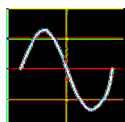
Dimensions: **PP 1100E:** 309 (L) x 141 (W) x 184 (H) mm. **PP 1500/2200E:** 420 (L) x 180 (W) x 237 (H) mm

Weight: **PP 1100E:** 14.6kg. **PP 1500E:** 25.4kg. **PP 2200E:** 31.1kg

Storage Temperature: -15°C ~ +45°C

Operating Temperature: 0°C ~ 40°C

Operating Humidity: 0%~95% non-condensed



DISTRIBUTED BY:

CyberPower's
Manufacturing
Facilities are
ISO 9001:2000,
ISO 14000, and
QC080000
Approved